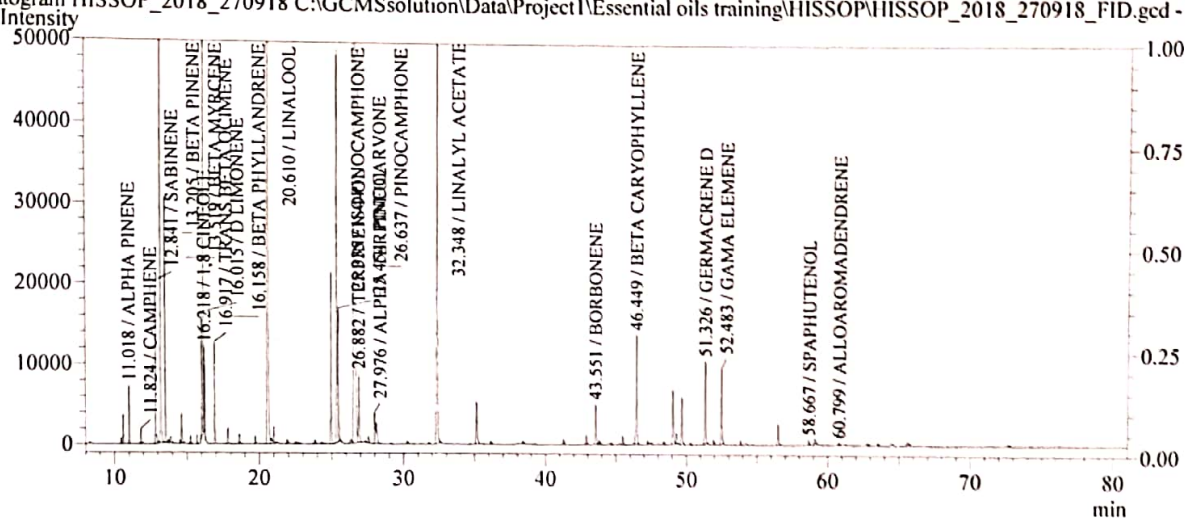


Sample Information

Analysis Date & Time : 9/27/2018 2:35:09 PM  
 Vial# : 1  
 Sample Name : HISSOP\_2018\_270918  
 Sample ID : HISSOP\_2018\_270918  
 Sample Type : Unknown  
 Injection Volume : 1.00  
 Sample Amount : 1  
 Data Name : C:\GCMSsolution\Data\Project I\Essential oils training\HISSOP\HISSOP\_2018\_270918\_FID.g  
 Method Name : C:\GCMSsolution\Data\Project I\Essential oils training\HISSOP OIL\_G\_N-2DET.qgm

Chromatogram HISSOP\_2018\_270918 C:\GCMSsolution\Data\Project I\Essential oils training\HISSOP\HISSOP\_2018\_270918\_FID.gcd - CH



Peak Table - Channel 1

Ret.Time	Name	Area	Area%	Units
11.018	ALPHA PINENE	20294	0.5348	%
11.824	CAMPHENE	5409	0.1425	%
12.841	SABINENE	62314	1.6422	%
13.205	BETA PINENE	398778	10.5096	%
13.519	BETA MYRCENE	94308	2.4854	%
16.015	D LIMONENE	53020	1.3973	%
16.158	BETA PHYLLANDRENE	220146	5.8018	%
16.218	1,8 CINEOLE	26694	0.7035	%
16.917	TRANS BETA OCIMENE	45112	1.1889	%
20.610	LINALOOL	546496	14.4026	%
25.335	ISOPINOCAMPHONE	219316	5.7799	%
25.454	PINOCARVONE	74352	1.9595	%
26.637	PINOCAMPHONE	1108457	29.2127	%
26.882	TERPINEN-4-OL	41599	1.0963	%
27.976	ALPHA TERPINEOL	18552	0.4889	%
32.348	LINALYL ACETATE	250693	6.6069	%
43.551	BORBONENE	27612	0.7277	%
46.449	BETA CARYOPHYLLENE	79905	2.1059	%
51.326	GERMACRENE D	57227	1.5082	%
52.483	GAMA ELEMENE	52643	1.3874	%
58.667	SPAPHUTENOL	3253	0.0857	%
60.799	ALLOAROMADENDRENE	1385	0.0365	%
Total		3407565	89.8043	